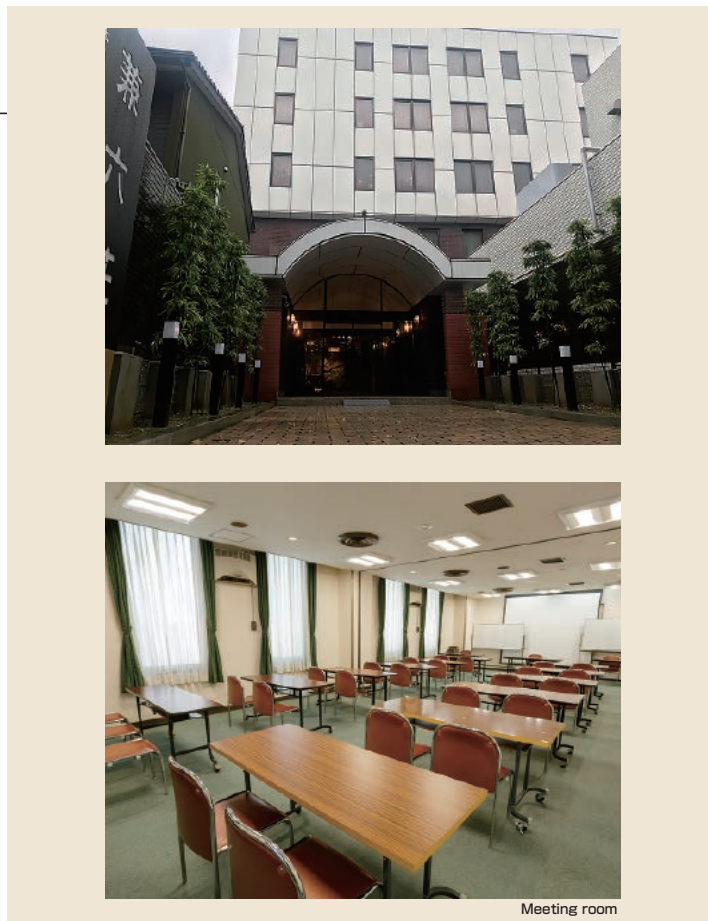


# 5 Kanazawa Kenroku-so

(Accommodation for the Promotion and Mutual Aid Corporation for Private Schools of Japan)

6-40 Oyama-machi, Kanazawa 920-0918  
 TEL: 076-232-1239 FAX: 076-232-1245  
 URL: <http://www.kenrokusou.com>  
 E-mail: [info@kenrokusou.com](mailto:info@kenrokusou.com)



Meeting room



■ Number of seats  
**60** seats (Meeting room)



■ Traffic access  
 10-min bus ride from JR Kanazawa Station  
 (Get off at Minami-cho and walk for 4 min.)  
 8 min by taxi from JR Kanazawa Station



■ Hours  
 9:00am~9:00pm

■ Date to start accepting reservation  
 Beginning of the month one year before the date of use



■ Accommodation  
 • Single room: 28  
 • Twin room: 18  
 • Triple room: 12  
 • Other room: 2  
 Total 60 rooms (104 people)



■ Restaurants/Cafés  
 Japanese restaurant "Yukizuri": 50 seats



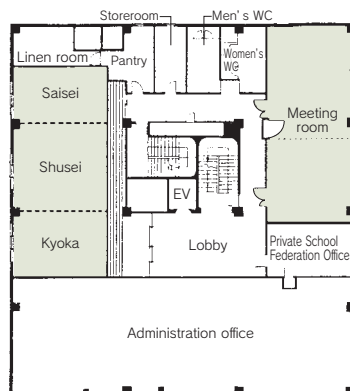
■ Parking  
 16 vehicles (pay) , free for 2 hours



■ Remarks  
 None

## Floor plan

■ 2F



### ■ Convention site

Site name	Floor	Area (㎡)	Width×Depth (m) (m)	Ceiling height (m)	Capacity (persons)					Remarks
					Fixed seats	School	Theater	Seated	Buffet	
Meeting room	2	88	—	—	—	40	60	40	40	The space can be partitioned into two rooms.
Japanese-style room	2	49 tatami-mat room	—	—	—	70	—	50	—	The space can be partitioned into three rooms

Width × Depth and the floor area may differ depending on the shape of the room.