

# 3 Ishikawa Prefecture Bunkyo Hall

10-5 Oyama-machi, Kanazawa 920-0918  
 TEL: 076-262-7311 FAX: 076-262-2779  
 URL: <http://www.bunkyo.or.jp/>  
 E-mail: [bunkyo@p2222.nsk.ne.jp](mailto:bunkyo@p2222.nsk.ne.jp)



Hall



■ Number of seats  
**590** seats (Hall)



■ Traffic access  
 10-min bus ride from JR Kanazawa Station  
 (Get off at Minami-cho and walk for 2 min.)  
 8 min by taxi from JR Kanazawa Station  
 50-min bus ride from Komatsu Airport  
 (Get off at Korinbo and walk for 10 min.)



■ Hours  
 9:00am~10:00pm  
 Closed: Year-end and New Year's holidays  
 (Dec. 29~Jan. 3)

■ Date to start accepting reservation  
 One year before the date of use



■ Accommodation  
 None



■ Restaurants/Cafés  
 Café... 30 seats



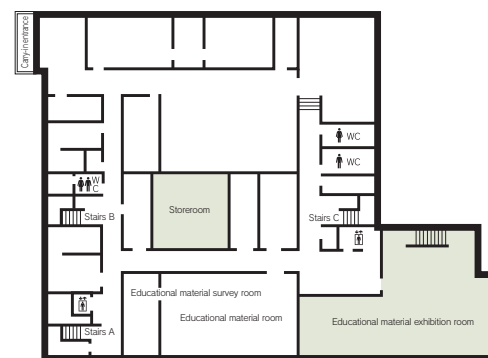
■ Parking  
 None



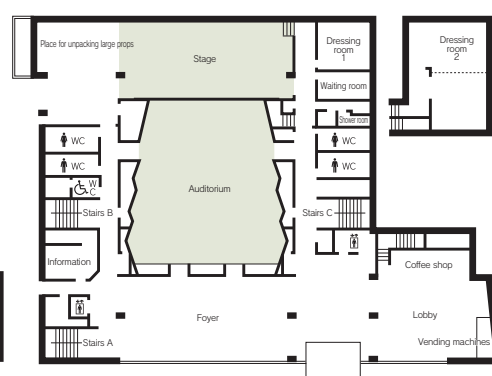
■ Remarks  
 2 dressing rooms,  
 1 waiting room  
 Tea-ceremony room  
 "Seishin-an"

## Floor plan

### ■ B1F



### ■ 1F



### ■ Convention site

Site name	Floor	Area (㎡)	Width×Depth (m)(m)	Ceiling height (m)	Capacity (persons)				Remarks
					Fixed seats	School	Theater	Seated	
Hall	—	998	—	—	590	—	—	—	1st floor 480 seats, 2nd-floor 110 seats
Meeting room 201	2	45	6.4× 7.0	2.7	20	—	—	—	
Meeting room 202	2	70	5.8×12.0	2.7	—	48	—	—	
Meeting room 203	2	43	6.4× 7.0	2.7	—	24	—	—	
Meeting room 204	2	50	4.5× 9.2	2.7	—	24	—	—	
Meeting room 401	4	142	12.5×11.4	2.7	—	72	—	54	
Meeting room 402	4	72	12.5× 5.8	2.7	—	48	—	42	
401 and 402 Meeting rooms (Large meeting room)	4	214	12.5×17.2	2.7	—	120	—	66	
Meeting room 403	4	60	7.5× 8.0	2.7	—	30	—	28	
Meeting room 404	4	46	6.2× 7.4	2.7	10	—	—	—	
Meeting room 405	4	73	9.8× 7.5	2.6	20	—	—	—	
Meeting room 406	4	64	9.8× 6.5	2.6	—	30	—	—	
Meeting room 407	4	75	9.8× 7.7	2.6	18	—	—	—	

Width × Depth and the floor area may differ depending on the shape of the room.



Meeting room 204



401 and 402 Meeting rooms (Large meeting room)



Meeting room 408, 409, 410 (Japanese-style rooms can be joined to form one large room.)



Meeting room 407

## Floor plan

### 2F



### 4F



### Convention site

Site name	Floor	Area(m <sup>2</sup> )	Width×Depth (m) (m)	Ceiling height (m)	Capacity (persons)					Remarks
					Fixed seats	School	Theater	Seated	Buffet	
Meeting room 408 (Japanese-style)	4	27-tatami-mat room	7.2× 6.2	2.3	—	42	—	30	—	
Meeting room 409 (Japanese-style)	4	27-tatami-mat room	7.2× 6.2	2.3	—	42	—	30	—	
Meeting room 410 (Japanese-style)	4	27-tatami-mat room	7.2× 6.2	2.3	—	42	—	30	—	
Meeting room 408, 409, 410 (Japanese-style rooms can be joined to form one large room.)	4	81-tatami-mat room	7.2×18.6	2.3	—	120	—	60	—	

Width × Depth and the floor area may differ depending on the shape of the room.