

6 Hotel Kanazawa

1-1 Horikawa-shinmachi, Kanazawa 920-0849
 TEL: 076-223-1111 FAX: 076-223-1110
 URL: <http://www.hotelkanazawa.co.jp/>



Superior twin



DINING TSUZUMI



■ Number of seats
1,360 seats (Diamond)



■ Traffic access
 1-min walk from JR Kanazawa Station, Kenrokuen Exit (East exit),
 18-min drive from Kanazawa West IC
 10-min drive from Kanazawa East IC
 55-min bus ride from Komatsu Airport



■ Hours
 8:00am~10:00pm (for Banquet)



■ Accommodation
 • Double room: 34
 • Business Double room: 25
 • Twin room: 17
 • Twin plus room: 55
 • Superior Twin room: 13
 • King room: 8
 • Others: 11
 • Total 163 rooms (383 people)



■ Restaurants/Cafés
 • Top Lounge & Restaurant "Raspberry": 120 seats (Incl. private rooms)
 • Restaurant "TSUZUMI": 111 seats (Incl. private rooms)



■ Parking
100 vehicles (pay)



■ Remarks
 Diamond entire room and lobby (Foyer) can be integrated into one space (1,600m²)

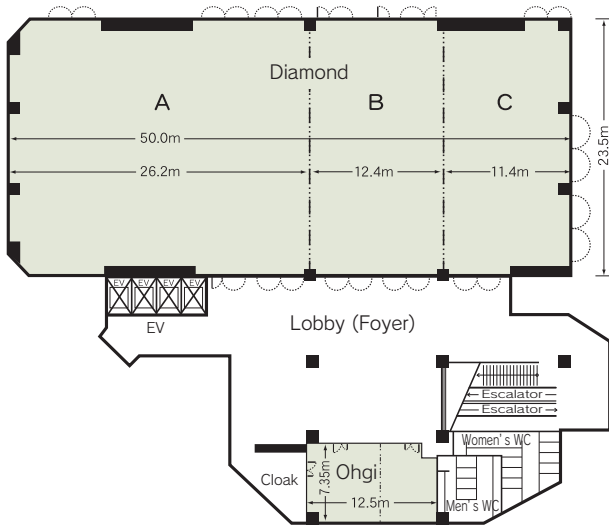
■ Convention site

Site name	Floor	Area (m ²)	Width×Depth (m)(m)	Ceiling height (m)	Capacity (persons)					Remarks
					Fixed seats	School	Theater	Seated	Buffet	
Diamond (entire room)	2	1,200	50.0×23.5	6.0	—	720	1,360	620	1,200	
Diamond (A)	2	630	26.2×23.5	6.0	—	336	512	250	400	
Diamond (B)	2	300	12.4×23.5	6.0	—	180	320	120	150	
Diamond (C)	2	270	11.4×23.5	6.0	—	120	252	90	120	
Ogi	2	91	12.5×7.35	2.7	—	42	76	40	50	The space can be partitioned into two rooms.
Emerald (entire room)	4	580	35.2×16.6	4.0	—	342	600	280	400	The space can be partitioned into two rooms.
Fugetsu	4	122	18.6× 7.3	3.5	—	57	110	50	60	The space can be partitioned into two rooms.
Fuji	4	138	10.6×13.0	3.0	—	60	98	50	60	
Aoi	4	45	6.2× 7.3	3.5	—	21	40	20	25	
Nishiki	4	45	6.2× 7.3	3.5	—	21	40	20	25	
Wedding party room	5	303	19.2×15.6	3.2	—	—	—	120	150	

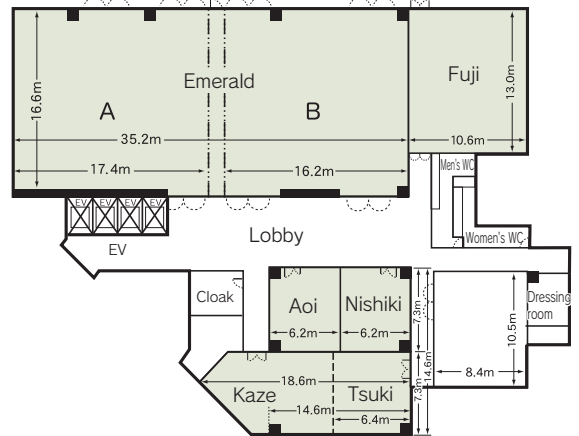
Width × Depth and the floor area may differ depending on the shape of the room.

Floor plan

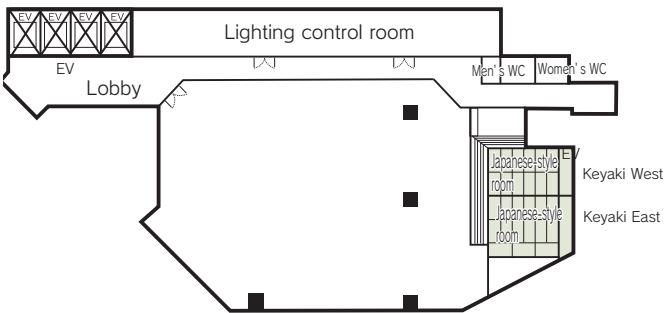
2F



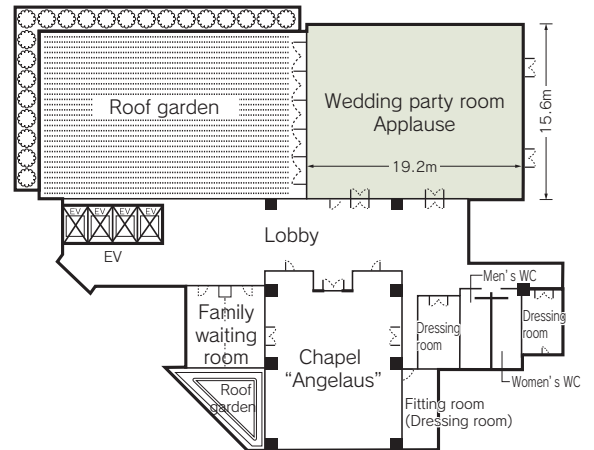
4F



3F



5F



2F Diamond



4F Emerald